



Alleghen County **Featured Trails**

Suggested walking routes for healthy living

PARKS

Healthy living is just one step away!



TRAIL TIPS

- Bring water
- Dress for the weather
- Wear comfortable walking shoes
- Wear bug repellent

LEGEND



parking



restroom



starting point



picnic/pavilion



suggested route

HEALTH



Many of the diseases ticks carry cause flu-like symptoms, such as fever, headache, nausea, vomiting, and muscle aches. While it's a good idea to take preventive measures against ticks year-round, be extra vigilant in warmer months (April-Sept) when ticks are most active. Repel ticks with 20 to 30% DEET or 0.5% permethrin, and walk in the center of trails. After enjoying the outdoors, conduct a full-body tick check and examine gear and pets. Ticks can ride home on clothing and pets, then attach later. For more information and how to remove ticks, visit www.cdc.gov/ticks.

To find other county parks and more information, visit www.AlleganCounty.org/Parks or call (269) 686-9088. For information about health programs and services, visit www.AlleganCounty.org/Health or call (269) 673-5411.

Bysterveld Park

Natural Resource Area

- ADA nature trails
- Rolling hills, meadows, wetlands, and woodland areas
- Fishing pond and deck (catch & release)
- Pavilion (no electricity)
- Picnic tables and grills
- Playground equipment
- Benches
- ADA vault restrooms
- Gravel parking lot

4171 14th Street, Wayland, MI 49348

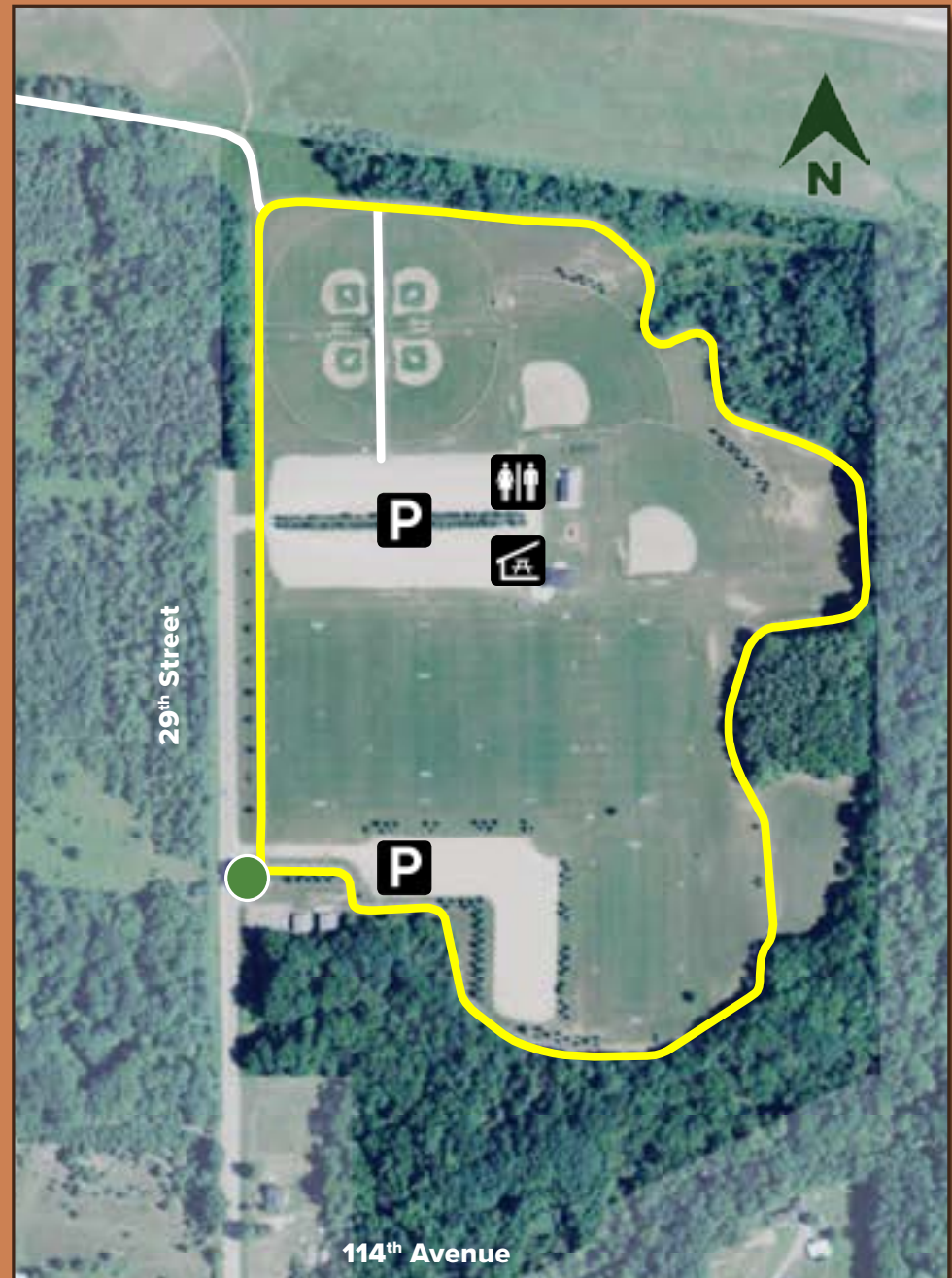


Allegan Sports Complex

Wellness Park

- One-mile paved walking loop
- Picnic shelter
- Full-service restrooms
- Playground equipment
- 4 soccer fields
- 4 baseball fields
- 2 softball fields
- Batting cage
- Football field

29th Street and 114th Avenue, Allegan, MI 49010



New Richmond Bridge Park

Located at the Historic Village

- 400' swing bridge across the Kalamazoo River
- Boardwalk trail along the river and wetlands
- Historic railroad bridge
- ADA accessible fishing docks
- Picnic tables and grills
- Benches
- ADA vault restrooms
- Interpretive signs
- Watercraft launch (concrete ramp)
- Paved parking lot

3160 Old Allegan Road, Fennville, MI 49408



Outdoor Discovery Center Nature Preserve

Trails, habitats, wildlife and natural playscapes

- Crushed stone or boardwalk trails for walking, jogging, hiking, cross-country skiing, and snowshoeing (many are ADA accessible)
- Outdoor classrooms, picnic pavilions and restrooms
- Fishing at designated public fishing ponds
- Visitor Center - North American Wildlife Exhibit (taxidermy and live animals)
- DeWitt Wildlife Enclosure (Rocky Mt Elk herd)
- Birds of Prey Education Facility
- Imagination Forest and Fillmore Discovery Park
- Neshnabe Summer Village (Native American cultural history exhibit)
- Pets only allowed if on 6 foot leash and kept 50 feet from the captive animal enclosures

www.outdoordiscovery.org

4214 56th Street, Holland, Mi 49423





www.allegancounty.org/parks